



Wire to Wire
Connectors

Crimp
Terminal 2W3001 Series

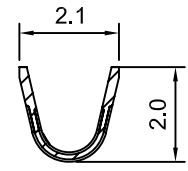
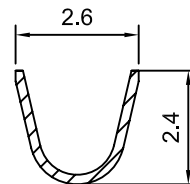
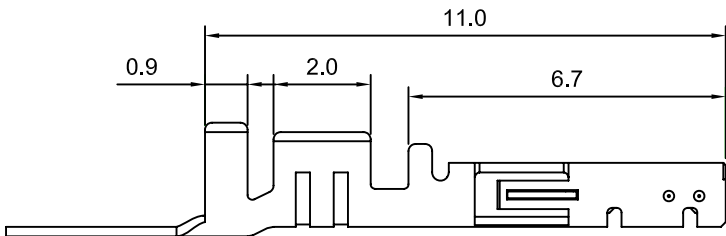
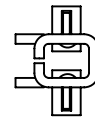
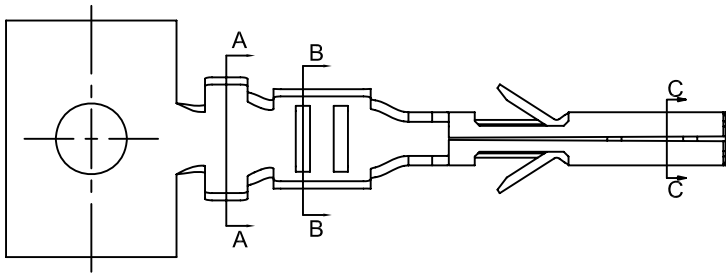
Specifications: **2W**



- Rated Voltage: 250V AC,DC
- Rated Current: 5.0A AC,DC
- Withstand Voltage: 1500V AC/Minute
- Contact Resistance: 10m Ω (Max.)
- Insulation Resistance: 1,000M Ω (Min.)
- Temperature Range: -40°C~+105°C

Use With:

- Use With: 2W3001HOM0-XXK
2W3001HDM0-XXK



SECTION:A-A

SECTION:B-B

Specification & Ordering Information:

Part No.	Thickness	Material	Finish	Wire Range	Insulation O.D	Q'ty/Reel
2W3001TOFP-6	0.20mm	Phosphor Bronze	Tin-Plated	AWG#20~#24	1.85mm(Max.)	10,000pcs
2W3001TOFP-5	0.20mm	Phosphor Bronze	Gold-Plated	AWG#20~#24	1.85mm(Max.)	10,000pcs

UL: Recognized NO. E306230