



Wire to Wire
Connectors

Crimp
Terminal 2W3001 Series

Specifications:

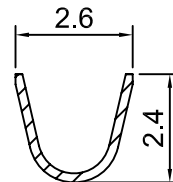
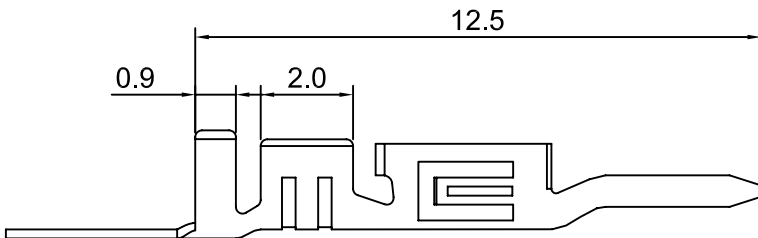
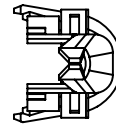
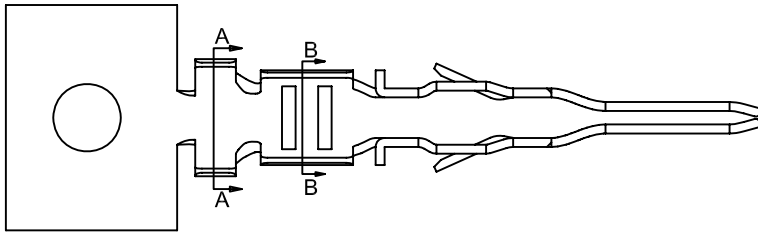
2W



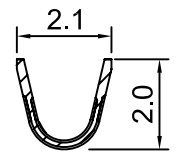
- Rated Voltage: 250V AC,DC
- Rated Current: 5.0A AC,DC
- Withstand Voltage: 1500V AC/Minute
- Contact Resistance: 10mΩ (Max.)
- Insulation Resistance: 1,000MΩ (Min.)
- Temperature Range: -40°C~+105°C

Use With:

- Use With: 2W3001HOF0-XX
2W3001HOF0-XXP
2W3001HDF0-XX
2W3001HDF0-XXP



SECTION:A-A



SECTION:B-B

Specification & Ordering Information:

Part No.	Thickness	Material	Finish	Wire Range	Insulation O.D	Q'ty/Reel
2W3001TOMP-6	0.20mm	Phosphor Bronze	Tin-Plated	AWG#20-#24	1.85mm(Max.)	10,000pcs
2W3001TOMP-5	0.20mm	Phosphor Bronze	Gold-Plated	AWG#20-#24	1.85mm(Max.)	10,000pcs

UL: Recognized NO. E306230