

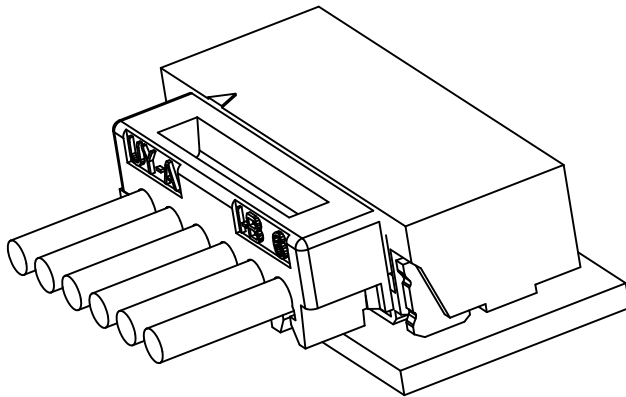


Wire to Board
Connectors

1W0601 Series
P.C.B layout & Assembly layout

Specifications:

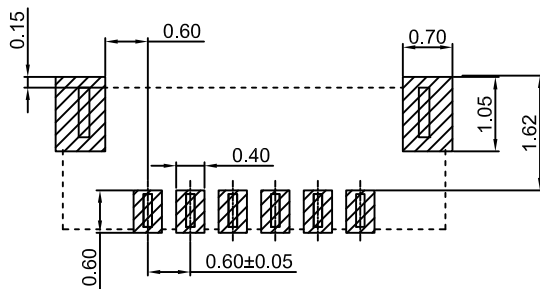
1W



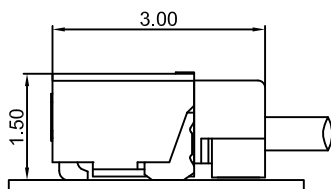
- Rated Voltage: 30V AC,DC
- Rated Current: 0.2A AC,DC (AWG #28)
- Withstand Voltage: 200V AC/Minute
- Contact Resistance: 30mΩ (Max.)
- Insulation Resistance: 100MΩ (Min.)
- Temperature Range: -25°C~+85°C
- Applicable Wire: AWG #36
O.D./0.29(Max)

PC board layout(viewed from component side)and Assembly layout

Right Angle
PC board layout



Right Angle
Assembly layout



UL: Recognized NO. E306230



Wire to Board
Connectors

Emboss
Type

SMT
Type

1W0601 Series
Wafer Right Angle

Specifications: 1W

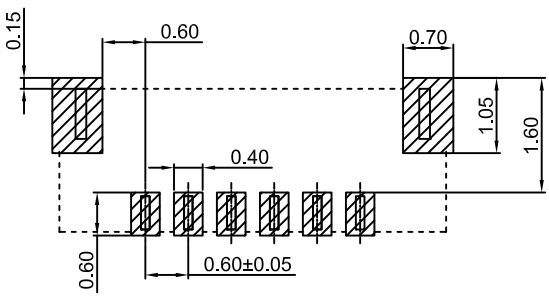
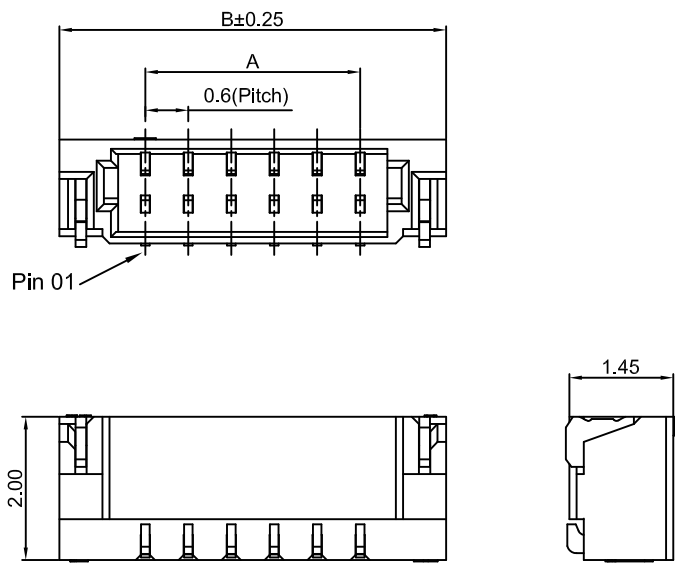
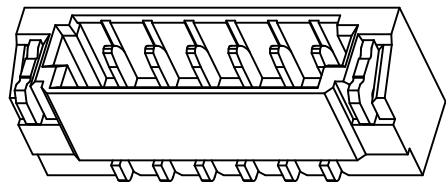
- Rated Voltage: 30V AC,DC
- Rated Current: 0.2A AC,DC
- Withstand Voltage: 200V AC/Minute
- Contact Resistance: 30mΩ (Max.)
- Insulation Resistance: 100MΩ (Min.)
- Temperature Range: -25°C~+85°C

Material:

- Base: High Temperature Plastic Natural UL 94V-0
- PIN: Phosphor Bronze, Tin-plated
- Solder tab: Brass, Tin-plated

Mates With:

- Mates With: 1W0601HO0-XX
1W0601HO0-XXB



P.C.B. LAYOUT

Dimensional & Ordering Information :

Circuits	Parts No.	Dimension mm		Reel/ Pcs
		A	B	
02	1W0601WOR0-02	0.6	3.0	3,500
03	1W0601WOR0-03	1.2	3.6	3,500
04	1W0601WOR0-04	1.8	4.2	3,500
05	1W0601WOR0-05	2.4	4.8	3,500
06	1W0601WOR0-06	3.0	5.4	3,500
07	1W0601WOR0-07	3.6	6.0	3,500
08	1W0601WOR0-08	4.2	6.6	3,500
09	1W0601WOR0-09	4.8	7.2	3,500
10	1W0601WOR0-10	5.4	7.8	3,500
11	1W0601WOR0-11	6.0	8.4	3,500
12	1W0601WOR0-12	6.6	9.0	3,500
13	1W0601WOR0-13	7.2	9.6	3,500
14	1W0601WOR0-14	7.8	10.2	3,500
15	1W0601WOR0-15	8.4	10.8	3,500
16	1W0601WOR0-16	9.0	11.4	3,500
17	1W0601WOR0-17	9.6	12.0	3,500
18	1W0601WOR0-18	10.2	12.6	3,500
19	1W0601WOR0-19	10.8	13.2	3,500
20	1W0601WOR0-20	11.4	13.8	3,500
21	1W0601WOR0-20	12.0	14.4	3,500
22	1W0601WOR0-20	12.6	15.0	3,500

UL: Recognized NO. E306230