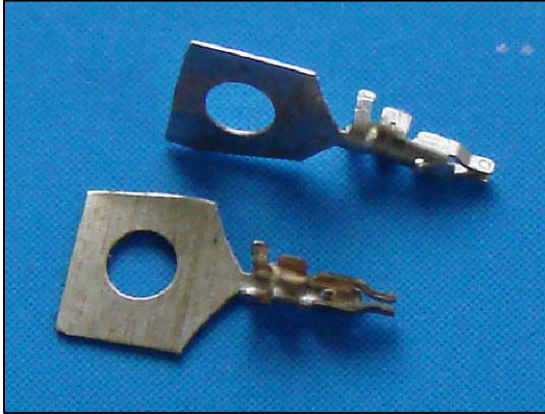




Wire to Board
Connectors

Crimp Terminal 1W1202 Series



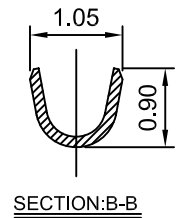
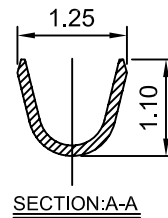
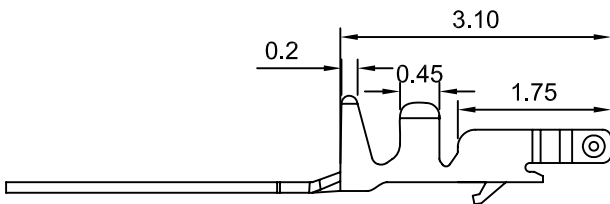
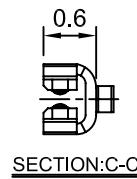
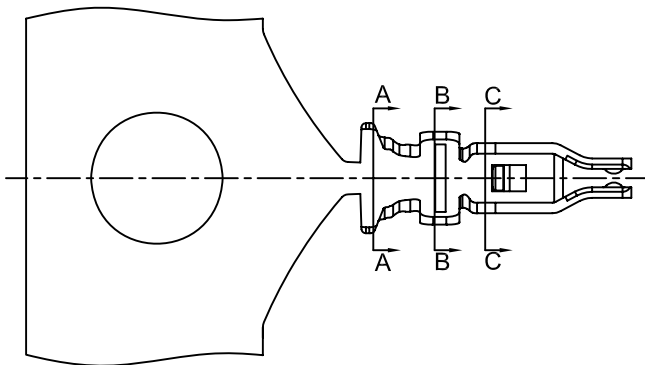
Specifications:

1W

- Rated Voltage: 50V AC,DC
- Rated Current: 1.5A AC,DC
- Withstand Voltage: 500V AC/Minute
- Contact Resistance: 20mΩ (Max.)
- Insulation Resistance: 100MΩ (Min.)
- Temperature Range: -25°C~+85°C

Use With:

- Use With: 1W1202HO0-XX



Specification & Ordering Information:

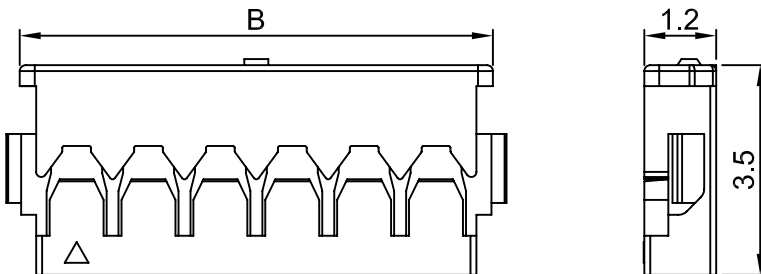
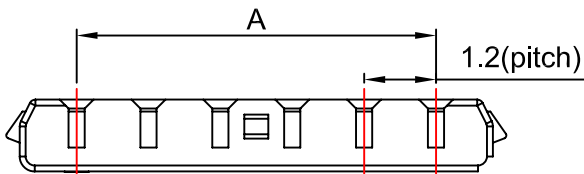
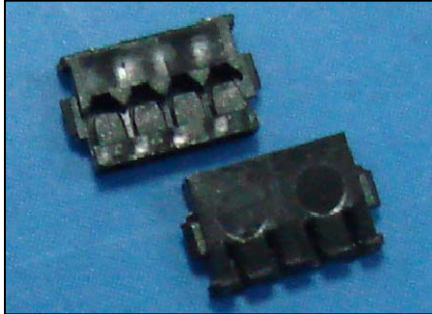
Part No.	Thickness	Material	Finish	Wire Range	Insulation O.D	Q'ty/Reel
1W1202TOP-5	0.12mm	Phosphor Bronze	Gold-Plated	AWG#28~#30	0.70mm(Max.)	30,000pcs

UL: Recognized NO. E306230



Wire to Board
Connectors

Housing 1W1202 Series



Specifications:

1W

- Rated Voltage: 50V AC,DC
- Rated Current: 1.5A AC,DC
- Withstand Voltage: 500V AC/Minute
- Contact Resistance: 20mΩ (Max.)
- Insulation Resistance: 100MΩ (Min.)
- Temperature Range: -25°C~+85°C

Material:

- Color: Black (Halogen Free)
- P.B.T UL 94V-0

Use With:

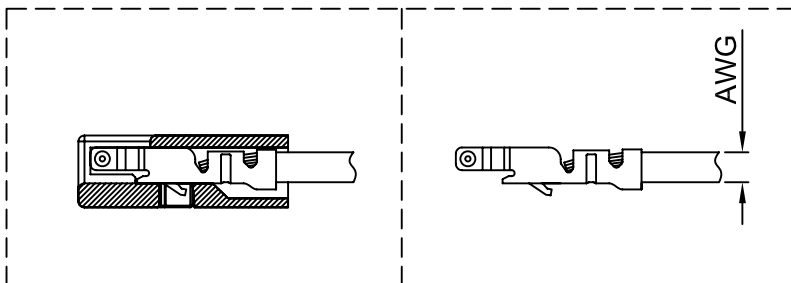
- Use With: 1W1202TOP-5

Mates With:

- Mates With: 1W1202WOV0-XX

Dimensional & Ordering Information:

Circuits	Parts No.	Dimension mm		Q'ty/ Bag
		A	B	
02	1W1202HO0-02	1.20	3.10	2,000
03	1W1202HO0-03	2.40	4.30	2,000
04	1W1202HO0-04	3.60	5.50	2,000
05	1W1202HO0-05	4.80	6.70	2,000
06	1W1202HO0-06	6.00	7.90	2,000



TERMINAL ASSEMBLY DRAWING

AWG:#28-#30

UL: Recognized NO. E306230



1.20mm (0.047") PITCH CONNECTOR

Wire to Board
Connectors

Emboss
Type

SMT
Type

1W1202 Series
Wafer Vertical

Specifications:

1W

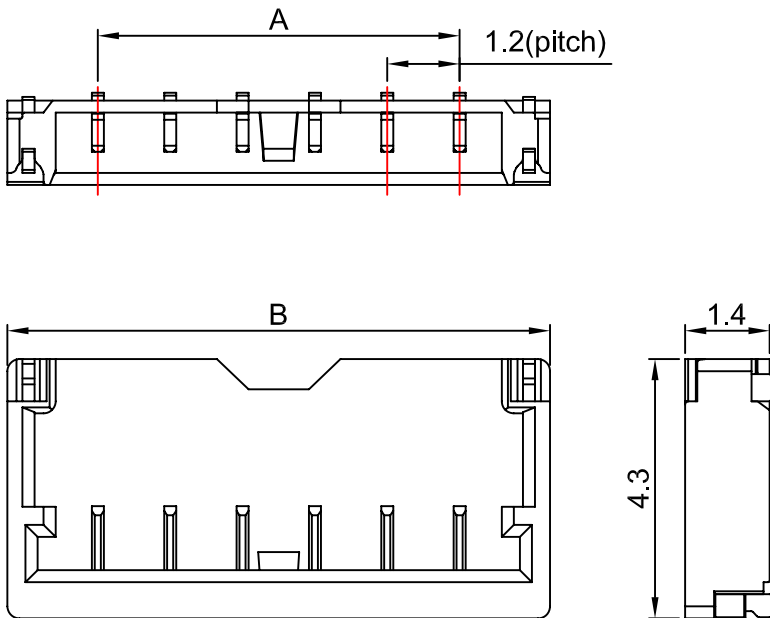
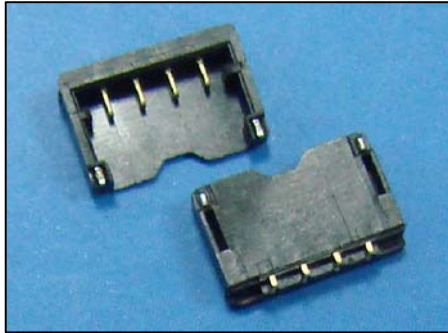
- Rated Voltage: 50V AC,DC
- Rated Current: 1.5A AC,DC
- Withstand Voltage: 500V AC/Minute
- Contact Resistance: 20mΩ (Max.)
- Insulation Resistance: 100MΩ (Min.)
- Temperature Range: -25°C~+85°C

Material:

- Base: High Temperature Plastic Black
UL 94V-0 (Halogen Free)
- PIN: Phosphor Bronze, Gold-plated
- Solder tab: Brass, Tin-plated

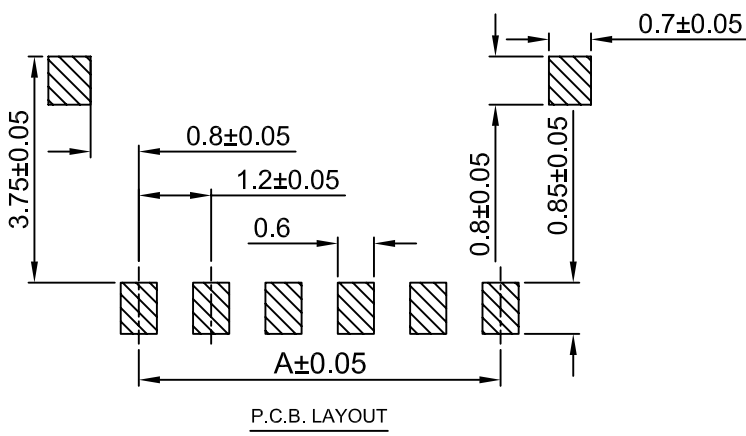
Mates With:

- Mates With: 1W1202HO0-XX



Dimensional & Ordering Information:

Circuits	Parts No.	Dimension mm		Reel/ Pcs
		A	B	
02	1W1202WOV0-02	1.20	4.20	4,500
03	1W1202WOV0-03	2.40	5.40	4,500
04	1W1202WOV0-04	3.60	6.60	4,500
05	1W1202WOV0-05	4.80	7.80	4,500
06	1W1202WOV0-06	6.00	9.00	4,500



UL: Recognized NO. E306230