



Wire to Board
Connectors

Crimp Terminal 1W1002 Series

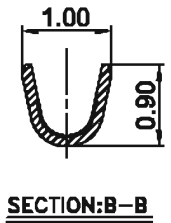
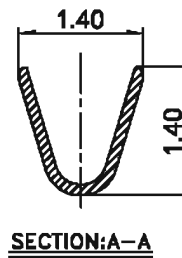
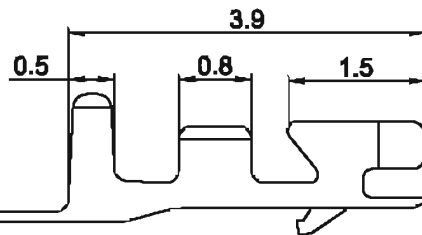
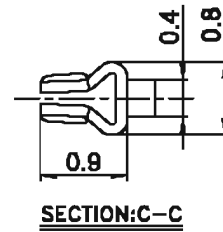
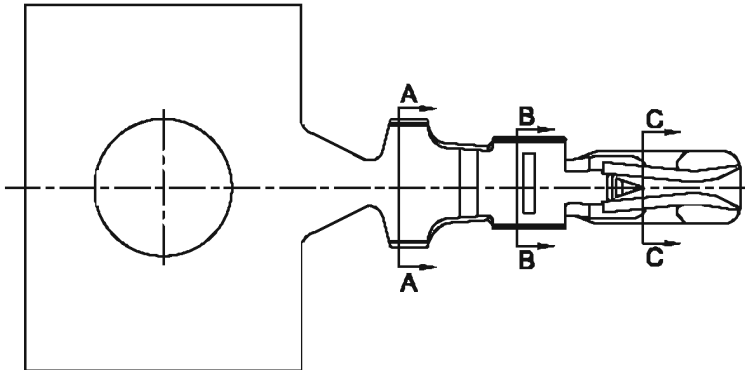
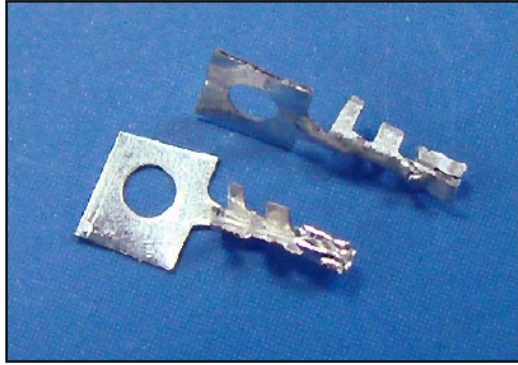
Specifications:

1W

- Rated Voltage: 125V AC,DC
- Rated Current: 1.0A AC,DC
- Withstand Voltage: 500V AC/Minute
- Contact Resistance: 20mΩ (Max.)
- Insulation Resistance: 100MΩ (Min.)
- Temperature Range: -25°C~+85°C

Use With:

- Use With: 1W1002HO0-XX
1W1002HO0-XXK



Specification & Ordering Information:

Part No.	Thickness	Material	Finish	Wire Range	Insulation O.D	Q'ty/Reel
1W1002TOP-2	0.12mm	Phosphor Bronze	Tin-Plated	AWG#28-#32	0.80mm(Max.)	20,000pcs

UL: Recognized NO. E306230



Wire to Board
Connectors

Housing 1W1002 Series



Specifications:

1W

- Rated Voltage: 125V AC,DC
- Rated Current: 1.0A AC,DC
- Withstand Voltage: 500V AC/Minute
- Contact Resistance: 20m Ω (Max.)
- Insulation Resistance: 100M Ω (Min.)
- Temperature Range: -25°C~+85°C

Material:

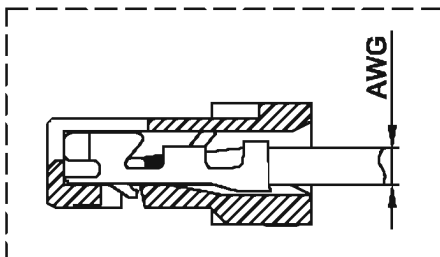
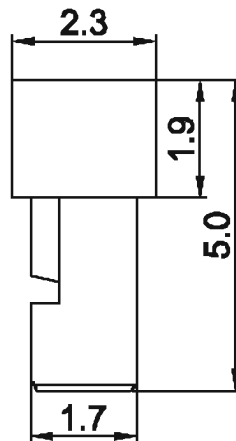
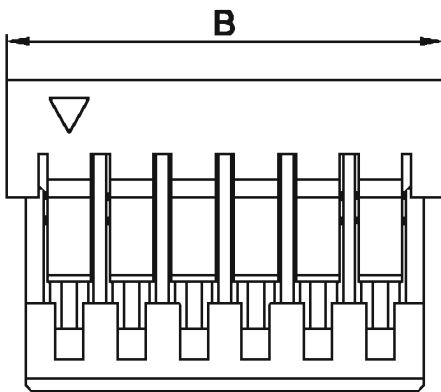
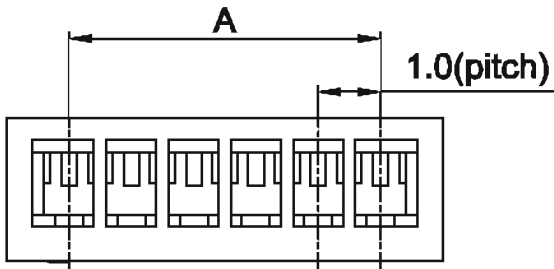
- Color: Natural (Halogen Free)
- P.B.T UL 94V-0

Use With:

- Use With: 1W1002TOP-2

Mates With:

- Mates With: 1W1002WOR0-XX
1W1002WOR0-XXK
1W1002WOV0-XX
1W1002WOV0-XXK



TERMINAL ASSEMBLY DRAWING

Dimensional & Ordering Information:

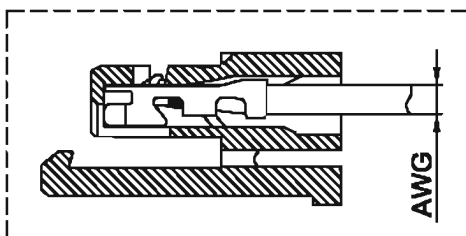
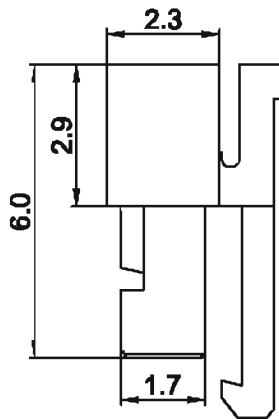
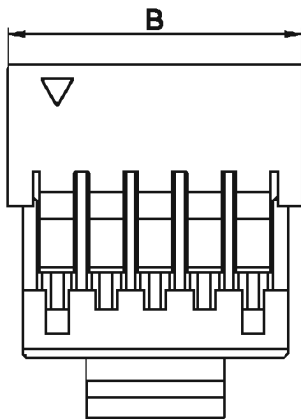
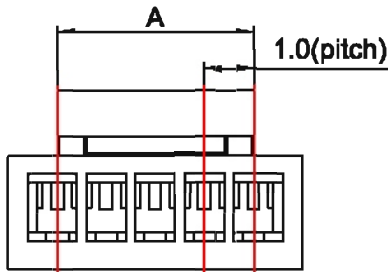
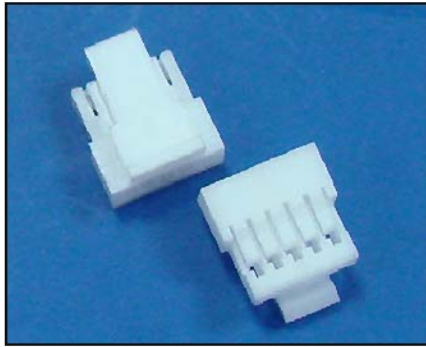
Circuits	Parts No.	Dimension mm		Q'ty/ Bag
		A	B	
02	1W1002HO0-02	1.0	3.0	1,000
03	1W1002HO0-03	2.0	4.0	1,000
04	1W1002HO0-04	3.0	5.0	1,000
05	1W1002HO0-05	4.0	6.0	1,000
06	1W1002HO0-06	5.0	7.0	1,000
07	1W1002HO0-07	6.0	8.0	1,000
08	1W1002HO0-08	7.0	9.0	1,000
09	1W1002HO0-09	8.0	10.0	1,000
10	1W1002HO0-10	9.0	11.0	1,000
11	1W1002HO0-11	10.0	12.0	1,000
12	1W1002HO0-12	11.0	13.0	1,000
13	1W1002HO0-12	12.0	14.0	1,000
14	1W1002HO0-14	13.0	15.0	1,000
15	1W1002HO0-15	14.0	16.0	1,000
16	1W1002HO0-16	15.0	17.0	1,000
17	1W1002HO0-17	16.0	18.0	1,000
18	1W1002HO0-18	17.0	19.0	1,000
19	1W1002HO0-19	18.0	20.0	1,000
20	1W1002HO0-20	19.0	21.0	1,000

UL: Recognized NO. E306230



Wire to Board
Connectors

Housing 1W1002 Series



TERMINAL ASSEMBLY DRAWING

Specifications:

1W

- Rated Voltage: 125V AC,DC
- Rated Current: 1.0A AC,DC
- Withstand Voltage: 500V AC/Minute
- Contact Resistance: 20m Ω (Max.)
- Insulation Resistance: 100M Ω (Min.)
- Temperature Range: -25°C~+85°C

Material:

- Color: Natural (Halogen Free)
- P.B.T UL 94V-0

Use With:

- Use With: 1W1002TOP-2

Mates With:

- Mates With: 1W1002WOR0-XX
1W1002WOR0-XXK
1W1002WOV0-XX
1W1002WOV0-XXK

Dimensional & Ordering Information:

Circuits	Parts No.	Dimension mm		Q'ty/ Bag
		A	B	
02	1W1002HO0-02K	1.0	3.0	1,000
03	1W1002HO0-03K	2.0	4.0	1,000
04	1W1002HO0-04K	3.0	5.0	1,000
05	1W1002HO0-05K	4.0	6.0	1,000
06	1W1002HO0-06K	5.0	7.0	1,000
07	1W1002HO0-07K	6.0	8.0	1,000
08	1W1002HO0-08K	7.0	9.0	1,000
09	1W1002HO0-09K	8.0	10.0	1,000
10	1W1002HO0-10K	9.0	11.0	1,000
11	1W1002HO0-11K	10.0	12.0	1,000
12	1W1002HO0-12K	11.0	13.0	1,000
13	1W1002HO0-12K	12.0	14.0	1,000
14	1W1002HO0-14K	13.0	15.0	1,000
15	1W1002HO0-15K	14.0	16.0	1,000
16	1W1002HO0-16K	15.0	17.0	1,000
17	1W1002HO0-17K	16.0	18.0	1,000
18	1W1002HO0-18K	17.0	19.0	1,000
19	1W1002HO0-19K	18.0	20.0	1,000
20	1W1002HO0-20K	19.0	21.0	1,000

UL: Recognized NO. E306230