



Wire to Board
Connectors

Emboss
Type

SMT
Type

1W1001 Series
Wafer Vertical

Specifications:

1W

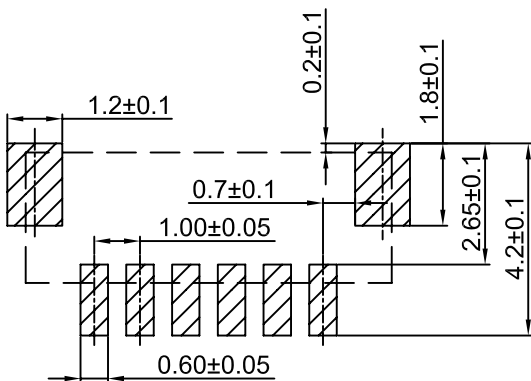
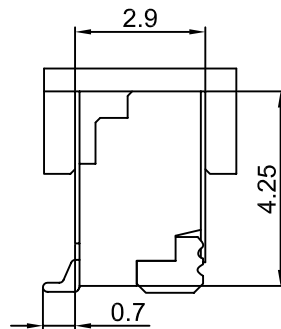
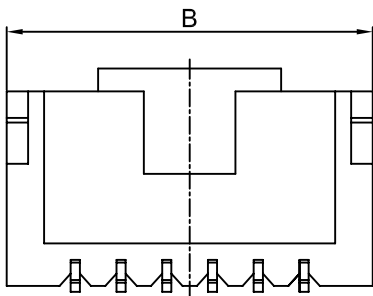
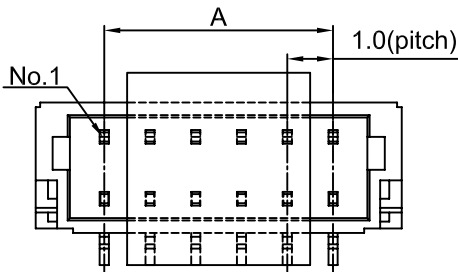
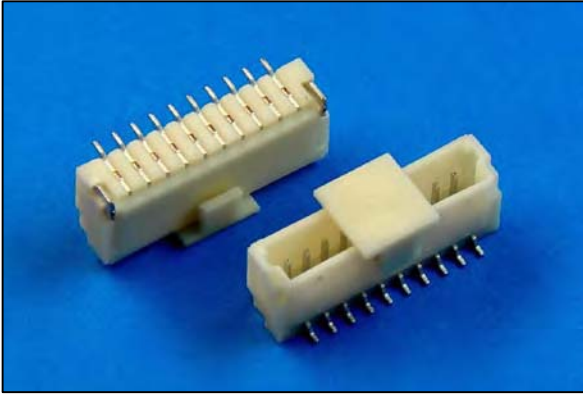
- Rated Voltage: 50V AC,DC
- Rated Current: 1.0A AC,DC
- Withstand Voltage: 500V AC/Minute
- Contact Resistance: 20mΩ (Max.)
- Insulation Resistance: 100MΩ (Min.)
- Temperature Range: -25°C~+85°C

Material:

- Base: High Temperature Plastic Natural UL 94V-0
- PIN: Phosphor Bronze, Tin-plated
- Solder tab: Phosphor Bronze, Tin-plated

Mates With:

- Mates With: 1W1001HO0-XX
1W1001HO0-XXB
1W1001HO0-XXN
1W1001HO0-XXNB



P.C.B. LAYOUT

Dimensional & Ordering Information:

Circuits	Parts No.	Dimension mm		Reel/ Pcs
		A	B	
02	1W1001WOV0-02C	1.0	4.0	1,000
03	1W1001WOV0-03C	2.0	5.0	1,000
04	1W1001WOV0-04C	3.0	6.0	1,000
05	1W1001WOV0-05C	4.0	7.0	1,000
06	1W1001WOV0-06C	5.0	8.0	1,000
07	1W1001WOV0-07C	6.0	9.0	1,000
08	1W1001WOV0-08C	7.0	10.0	1,000
09	1W1001WOV0-09C	8.0	11.0	1,000
10	1W1001WOV0-10C	9.0	12.0	1,000
11	1W1001WOV0-11C	10.0	13.0	1,000
12	1W1001WOV0-12C	11.0	14.0	1,000
13	1W1001WOV0-13C	12.0	15.0	1,000
14	1W1001WOV0-14C	13.0	16.0	1,000
15	1W1001WOV0-15C	14.0	17.0	1,000
16	1W1001WOV0-16C	15.0	18.0	1,000
17	1W1001WOV0-17C	16.0	19.0	1,000
18	1W1001WOV0-18C	17.0	20.0	1,000
19	1W1001WOV0-19C	18.0	21.0	1,000
20	1W1001WOV0-20C	19.0	22.0	1,000
21	1W1001WOV0-21C	20.0	23.0	1,000
22	1W1001WOV0-22C	21.0	24.0	1,000
23	1W1001WOV0-23C	22.0	25.0	1,000
24	1W1001WOV0-24C	23.0	26.0	1,000
25	1W1001WOV0-25C	24.0	27.0	1,000
26	1W1001WOV0-26C	25.0	28.0	1,000
27	1W1001WOV0-27C	26.0	29.0	1,000
28	1W1001WOV0-28C	27.0	30.0	1,000
29	1W1001WOV0-29C	28.0	31.0	1,000
30	1W1001WOV0-30C	29.0	32.0	1,000

C: With Cap

UL: Recognized NO. E306230